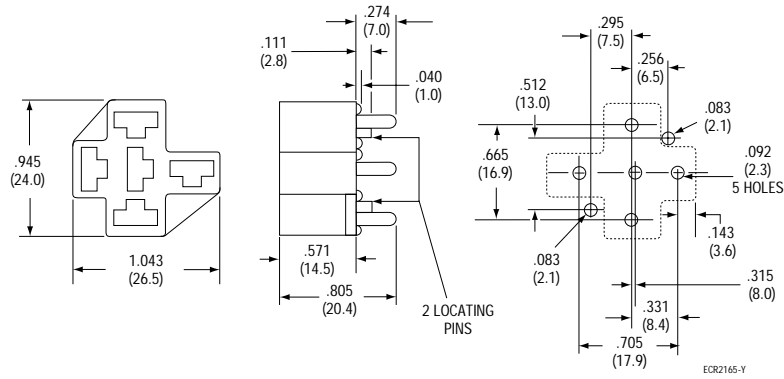


Connectors for VF4/F4

Connectors for use with quick connect terminal VF4-1\*\*\*\*, VF4-4\*\*\*\* relays

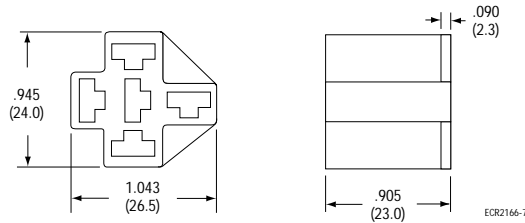
PCB socket

**VCF4-1000**



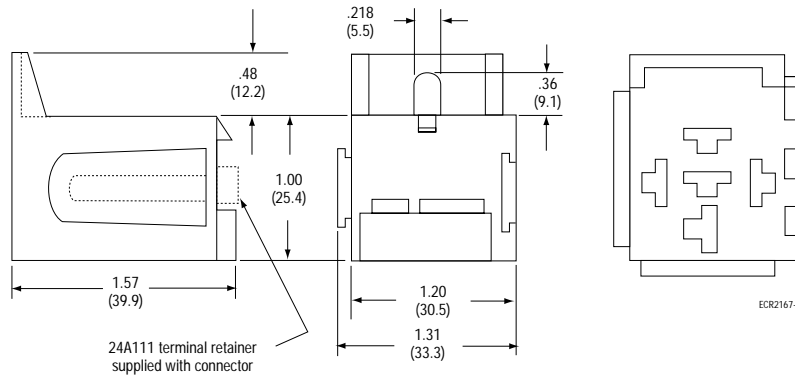
Wiring harness style connector  
(order terminals separately)

**VCF4-1001**



Wiring harness style, bracket mount  
socket (order terminals separately)  
(mount individually or can be  
interlocked)

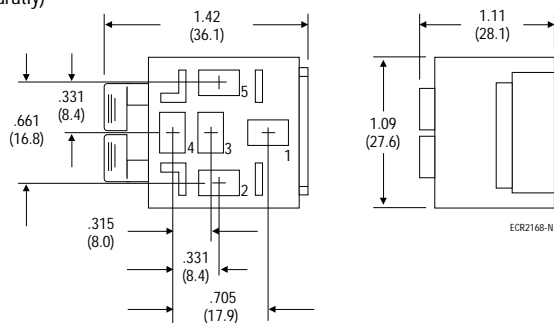
**VCF4-1002**



Connectors for use with quick connect terminal VF4-2\*\*\*\* or VF4-5\*\*\*\*relays with shrouded dust cover

(order terminals separately)

**VCF4-1003**



Connectors for VF4/F4; VF7/F7

Connectors for use with VF4-3\*\*\*\* or VF4-6\*\*\*\*relays with weatherproof cover (Consult factory)

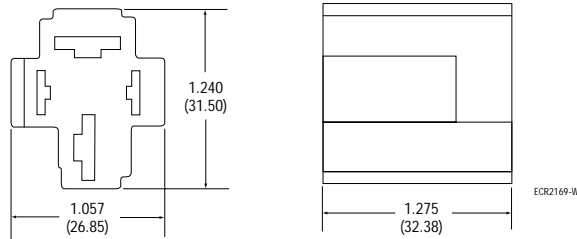
Ordering information

Connector	Tyco order number	Required crimp terminals (Order separately)				
		Part number crimp terminals	Tyco order number	Qty. Required Wire AWG	Form A	Form C
VCF4-1000	1393310-3	none	none	N/A	0	0
VCF4-1001	3-1393310-7	AMP60249-1 AMP42281-1	60249-1 42281-1	12 - 16 14 - 18	4	5
VCF4-1002 VCF4-1003	4-1419106-0 1-1393305-3	26A1348A 26A1348B 26A1348C	1-1393310-8 1-1393310-9 2-1393310-0	18 - 20 14 - 16 10 - 12	4	5

Connectors for use with quick connect terminal VF4-7 relays

Wiring harness style connector  
(order terminals separately)

VCF7-1000



Ordering information

Connector	Tyco order number	Required crimp terminals (Order separately)			Qty. Required
		Part number crimp terminals	Tyco order number	Wire AWG	
VCF7-1000	1393310-4	AMP280756-4 AMP280755-4 AMP42281-1	280756-4 280755-4 42281-1	10 - 12 6 - 10 14 - 18	2 (contacts) 2 (contacts) and 2 (coil)